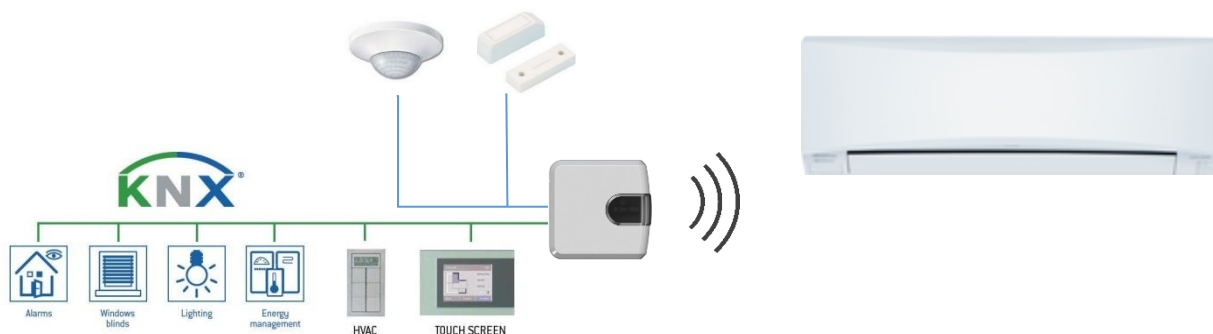




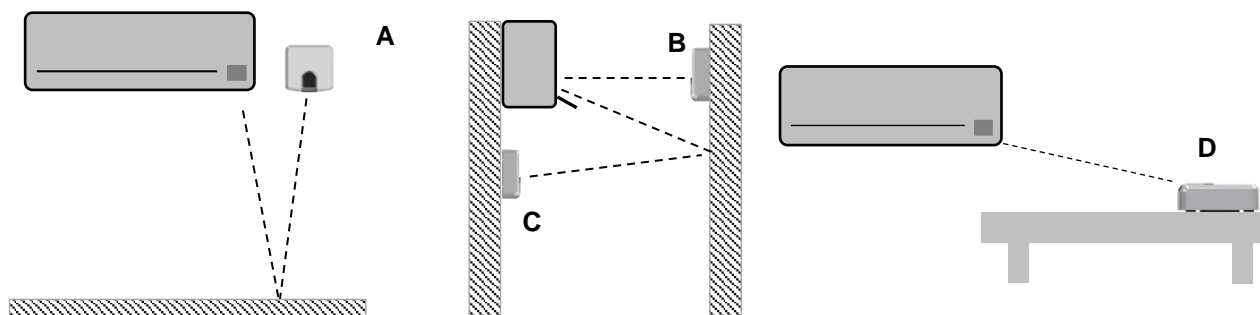
## IntesisBox® IS-IR-KNX-1i

### KNX interface for Air Conditioners control over IR



IntesisBox® IS-IR-KNX-1i allows monitoring and control of Air Conditioners from KNX installations. Compatible with most AC units with an IR receiver (check section 3 for more information).

Small dimensions and easy installation. It can be installed side-by-side with the AC unit (case A), in front of the AC unit (case B), under the AC unit (case C) or on a desktop position (case D). On the other side, it connects directly to the KNX TP-1 (EIB) bus.



Great flexibility of integration into your KNX projects. Configuration is made directly from ETS, the database of the device comes with a complete set of communication objects allowing, from a simple and quick integration using the basic objects, allowing a simple and quick integration.

Two binary inputs for potential-free contacts provide the possibility to integrate many types of external devices for window status control (window contacts) and occupancy (presence sensor).

Includes a USB connector for fast programming download.

IntesisBox® IS-IR-KNX-1i will allow you offering a full integration of the air conditioning in your KNX projects at a very affordable cost.

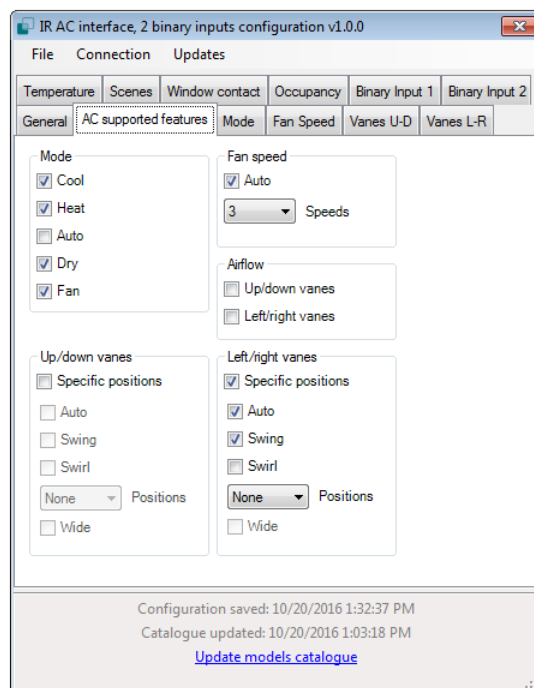
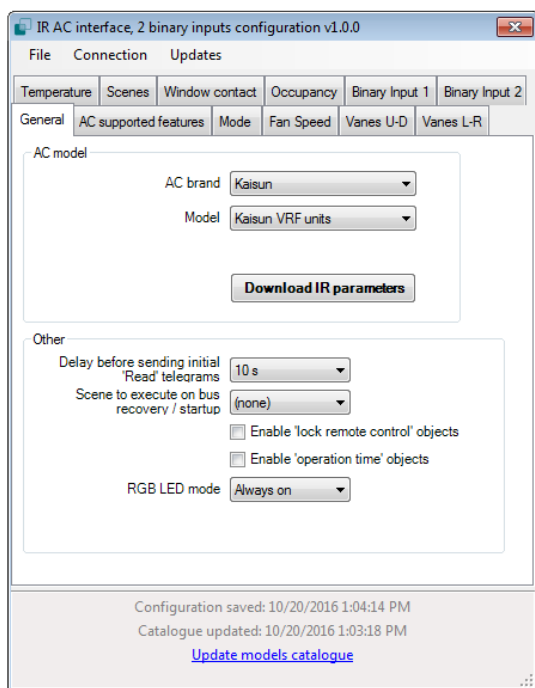
## 1. Communication objects

The ETS database of the device comes with multiple communication objects allowing great flexibility of integration.

- 1: Control\_ On/Off [DPT\_1.001] - 0-Off;1-On
- 2: Control\_ Mode [DPT\_20.105] - 0-Aut;1-Hea;3-Coo;9-Fan;14-Dry
- 3: Control\_ Mode Cool/Heat [DPT\_1.100] - 0-Cool;1-Heat
- 10: Control\_ Fan Speed [DPT\_5.001] - Thresholds: 100\*(n+0'5)/N...
- 11: Control\_ Fan Speed Man/Auto [DPT\_1.002] - 0-Manual;1-Auto
- 36: Control\_ Vanes L-R Man/Auto [DPT\_1.002] - 0-Manual;1-Auto
- 45: Control\_ Vanes L-R Swing [DPT\_1.002] - 0-Stop;1-Swing
- 50: Control\_ Setpoint Temperature [DPT\_9.001] - °C
- 52: Control\_ Ambient Temperature [DPT\_9.001] - °C
- 70: Status\_ On/Off [DPT\_1.001] - 0-Off;1-On
- 71: Status\_ Mode [DPT\_20.105] - 0-Aut;1-Hea;3-Coo;9-Fan;14-Dry
- 72: Status\_ Mode Cool/Heat [DPT\_1.100] - 0-Cool;1-Heat
- 79: Status\_ Fan Speed [DPT\_5.001] - 100\*n/N %
- 80: Status\_ Fan Speed Man/Auto [DPT\_1.002] - 0-Manual;1-Auto
- 104: Status\_ Vanes L-R Man/Auto [DPT\_1.002] - 0-Manual;1-Auto
- 113: Status\_ Vanes L-R Swing [DPT\_1.002] - 0-Stop;1-Swing
- 117: Status\_ AC Setpoint Temperature [DPT\_9.001] - °C
- 118: Status\_ IntesisBox Ambient Temperature [DPT\_9.001] - °C
- 119: Status\_ IntesisBox Reference Temperature [DPT\_9.001] - °C
- 120: Status\_ Error/Alarm [DPT\_1.005] - 0-No alarm;1-Alarm
- 121: Status\_ Error Code [2-byte signed value] - Error Code
- 122: Status\_ Error Text [DPT\_16.001] - Error Text

## 2. Plugin

Multiple parameters can be configured to ensure the maximum flexibility for the integration, not only in functionality of the device but in visibility of objects in ETS for a more comfortable integrator’s work. Configuration can be done using our own plugin.



### 3. List of compatible AC indoor units.

A list of indoor unit model references compatible with IS-IR-KNX-1 and their available features can be found in:

[http://intesis.com/pdf/IntesisBox\\_IS-IR-xxx-1\\_AC\\_Compatibility.pdf](http://intesis.com/pdf/IntesisBox_IS-IR-xxx-1_AC_Compatibility.pdf)

### 4. Technical Specifications

<b>Enclosure</b>	ABS (V-0). 2,1 mm thickness PC (V-2). 1 mm thickness
<b>Dimensions</b>	81 x 78 x 28 mm
<b>Weight</b>	76 g
<b>Color</b>	Ivory white
<b>Power supply</b>	29V DC, 17mA Supplied through KNX bus
<b>Mounting</b>	Wall and desktop
<b>LED indicators</b>	1 x Device status and KNX programming
<b>Push buttons</b>	1 x KNX programming.
<b>Binary inputs</b>	2 x binary inputs for potential-free contacts. Signal cable length: 5m unshielded, may be extended up to 20m with twisted.  Compliant with the following standards: IEC61000-4-2: level 4 - 15kV (air discharge) - 8kV (contact discharge) MIL STD 883E-Method 3015-7: class3B
<b>Console port</b>	Mini USB port for console usage
<b>Configuration</b>	Configuration with ETS
<b>Operating Temperature</b>	From 0°C to 40°C
<b>Operating humidity</b>	<93% HR, no condensation
<b>Stock humidity</b>	<93% HR, no condensation

## 5. Dimensions

